



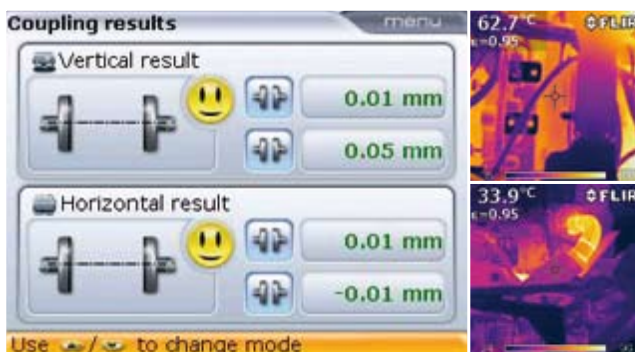
## **Stiebel** Ing.Service

Allround Support. Around the Clock.



# Your satisfaction is our driving aim

Transmission service from the professionals – Stiebel Ing.Service is your expert service provider for drive technology.



*For a smooth start:  
Stiebel After-Sales Service*

## Commissioning/installation inspection

After-sales service is a key part of customer support. Benefit from our know how.

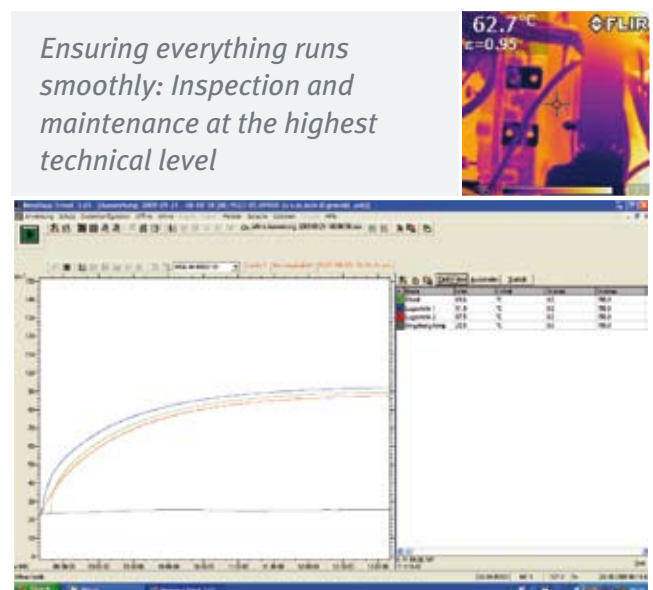
- Inspection of installation positions and oil quantities
- Laser alignment and readjustment of transmission
- Help with troubleshooting
- Temperature monitoring
- Prototype inspection at local level

## Inspection and Maintenance Service

Regular maintenance is better than system stoppages. We can offer you tailor-made solutions.

- Oil change and oil analysis
- Noise level checks
- Temperature checks with thermal imaging camera
- Checking the transmission for oil leaks
- Status monitoring using endoscopy
- Power consumption measurement
- Drafting a maintenance and inspection schedule

*Ensuring everything runs smoothly: Inspection and maintenance at the highest technical level*





 **Service Hotline**  
☎ **+49 18 02 / 784 32 35\***



*Available to you around the clock: our highly-trained service employees*

## Service Hotline

Our hotline is there for you day and night, including weekends and public holidays, with no waiting or irritating questioning.

- Continuous availability 7 days per week
- Consultation is provided by well-trained, well-qualified Stiebel employees
- Spare parts service: the fastest provisioning and dispatch of gear components
- Repair service: Organisation and implementation by arrangement

\*subject to charge

## Stiebel training courses – at your premises or ours

The aim of the training course is to make your personnel familiar with Stiebel gear systems. Stiebel Ing.Service will show you how it works:

- Familiarization with the structure and function of the gears
- Installing and removing transmissions
- How to read spare parts lists and drawings for the gears correctly
- Producing diagnoses independently
- Identifying the right spare parts when converting to different speeds or installation positions
- Carrying out maintenance and repairs one's self
- Recognising the need for tools

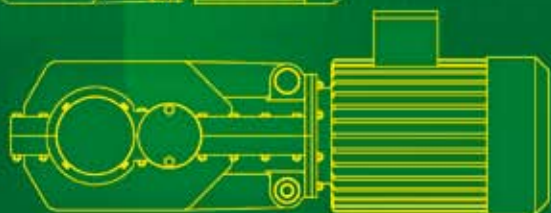
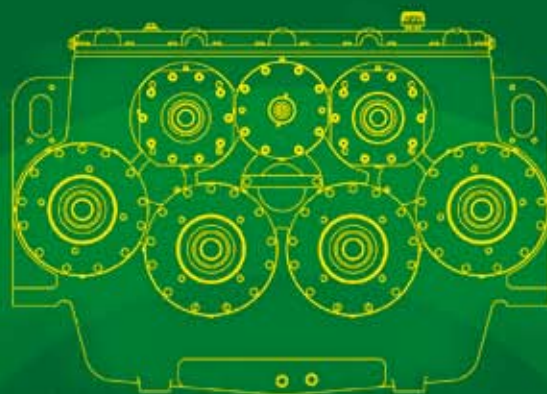


*Knowing how things work: training courses given by our gears experts*



## Special Gear Units

Custom-made Drive Solutions



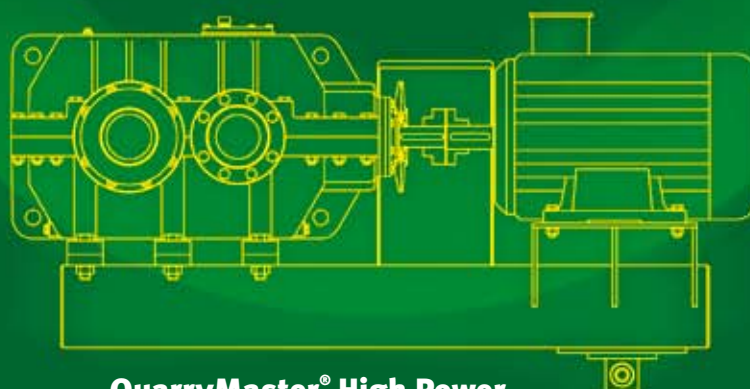
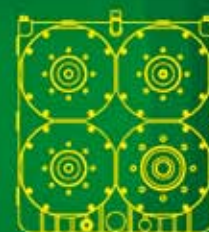
### QuarryMaster®

Helical-bevel Geared Motors



### P 2000

Pump Drives



### QuarryMaster® High Power

Drive Groups



Stiebel Ing.Service GmbH & Co. KG

Friedrich-Engels-Straße 22

D-51545 Waldbröl

Phone +49 2291 90711-0

Fax +49 2291 90711-390

Internet: [www.stiebel.de](http://www.stiebel.de)

E-Mail: [service@stiebel.de](mailto:service@stiebel.de)